



TFA s.r.o.

Procházková 430

Kostelec nad Orlicí 517 41

DIČ: CZ02543419

CZECH REPUBLIC

tvoda@tfa.cz

www.tfa.cz



Phone: +420 733 304 659

+420 494 323 575

800 400 246

CZ INNOVATION FOR WINTER

Tuning

**basic service machine
for skis and snowboards**

SECURE

Precise shaping
of side edges
skis and snowboards
within the range
85 - 90 degrees
by 0,5 degrees

Precise shaping
of bottom edges
skis and snowboards
within the range
0,6 - 2,6 degrees
by 0,2 degrees

Adjustable revolution
within the range
1000 - 2500 rev/min

Shaping by
special diamond
belts 25 x 1050

The zircon and ceramics
belts are usable



EUROPEAN UNION
European Regional Development Fund
Operational Programme Enterprise
and Innovations for Competitiveness

PRODUCT ADVANTAGES

A height adjustable machine according to operator requirements

The machine uses only electrical power, it does not need pressure air

Small layout space and the possibility to move the machine on transport wheels through the door width of 700 mm

Digital control of disc revolutions, distribution of the grinding and cooling liquid

Shaping of edges with a manual feeding in accordance to operator requirements

An integrated stainless steel withdrawable tank for cooling and grinding liquid with capacity of 50l, the tank is equipped by coarse fine and magnetic filters

Easy, fast and well-arranged machine operation and maintenance with electronics by the Schneider Electric company

A control LCD touch display is used

All of working areas are made of stainless steel

Language versions

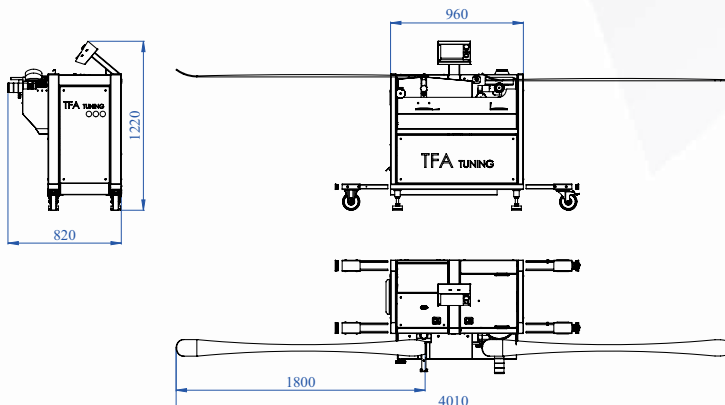


NOTE

TECHNICAL PARAMETERS

TUNING

Size	mm	960 x 820 x 1220
Weight	kg	210
Power	kW	1,1
Power supply	V	3 x 400 V – AC, 50 Hz
Protection	A	16



EUROPEAN UNION
European Regional Development Fund
Operational Programme Enterprise
and Innovations for Competitiveness